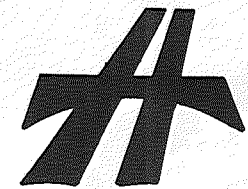
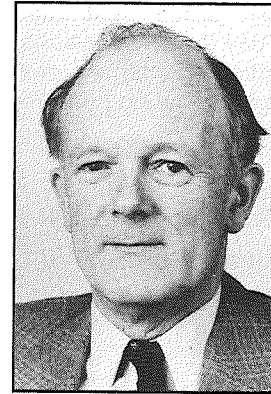


**The Institution of Highways and Transportation  
NORTHERN BRANCH**

A short history of the  
First Twenty Five Years  
1958 - 1983



## The President's Message



**M F Hardy**  
President of the Institution  
1983-84

It seems very appropriate that the Northern Branch is celebrating its first twenty-five years at a time when the Institution is growing in strength and influence. The prospects are excellent as we widen and increase our membership and improve the service with an expanding journal and an even better range of branch and national meetings, training sessions and conferences.

Our series of Guideline publications on accidents, lorries and now cycling, are widely accepted, and further subjects are being examined. Our objective is to see where there are deficiencies in technical and administrative thinking and practice, and then to bring together expertise from our membership to analyse the problems and produce sound and well researched advice. We are in an almost unique position to tackle these projects.

Branches provide the most important part of the Institution's learned society, public relations and social activities. Your own initiative in organising a public exhibition, to mark twenty-five years of achievement, is an excellent one, and, by any standards, the arrangements for holding the Locan Cup Competition at Ulverston were a great success.

As we look to the future, there is a need to recruit younger people in our profession and encourage them to play an active part in Institution affairs. As an example, we know that one or two day training sessions, specifically designed for young members or potential recruits, are ideal for generating interest and involvement as well as contributing positively to spreading technical knowledge.

Congratulations on a successful twenty-five years. The Institution of Highways and Transportation and its Northern Branch have excellent prospects for the future.

*Annual Party*

## Contents

	<i>Page</i>
Origins .....	4
Officers and Committee .....	6
The Chairman's Jewel .....	11
Membership .....	12
Meetings .....	13
Certificate of Merit .....	15
Visits .....	16
Social Functions .....	21
Local Cup .....	23
Chairman's Message .....	25
Acknowledgements .....	27

## Origins

The Institution of Highway Engineers was first established in 1930 and by the start of the Second World War two branches had been formed, namely the Northern and Midland Branches. The Northern Branch did not cover the area of the present Branch but embraced a wider area. In time, however, the Northern Branch as such ceased to exist when the North Western and North Eastern Branches were formed.

In 1958 the Council of the Institution agreed that a new Branch could be formed which covered the counties of Cumberland and Westmorland. The inaugural meeting was held in the Council Chambers at The Courts, Carlisle on 17 June 1958. The meeting was chaired by the then President of the Institution, Major H E Aldington CBE, MICE, FInstHE and he was supported by the Secretary Mr N W Jenson. The meeting was attended by 29 members and 24 visitors.

The President opened the meeting by explaining its purpose and stressing the growing importance of Highway Engineering. David Morris, the County Surveyor of Westmorland was elected the first Chairman and John Lea the Vice Chairman. Alan Brant was appointed Honorary Secretary and Don Leech Honorary Treasurer.

After formally voting for the formation of a new Branch, discussion took place on the subject of the name of the Branch. Suggestions such as "Lakes", "Border and Lakes" and "Lakes and Southern Scotland", were discounted. Tony Walsh suggested that as the old "Northern" Branch no longer existed, the name could be used again. The proposal was accepted unanimously and the Northern Branch was reborn.

The members and officers of the first Branch Committee were:

<i>Chairman:</i>	D Morris
<i>Vice Chairman:</i>	J Lea
<i>Honorary Secretary:</i>	A N Brant
<i>Honorary Treasurer:</i>	D Leech
K C Horner	
T Graham	
F Birkbeck	
<i>Auditors:</i>	E C Ashby
	B D Cook

The newly formed Branch fixed its first works visit at the meeting and 78 members and guests, still thought to be the highest ever attendance, visited the Calder Hall Nuclear Power Station on a joint visit with the North Eastern Branch.

Early Committee meetings of the Branch were held at many varied locations such as Keswick, Penrith, Carlisle and Kendal with a definite preference for licensed premises. The houses of Ken Horner and Tom Graham were used occasionally and even in recent years Peter Guthrie's home has been used in an emergency. Since 1972 meetings have been regularly held in the Divisional Depot at Skirsgill, Penrith by courtesy of succeeding Chairmen of the former Cumberland and the present Cumbria Highways Committee.

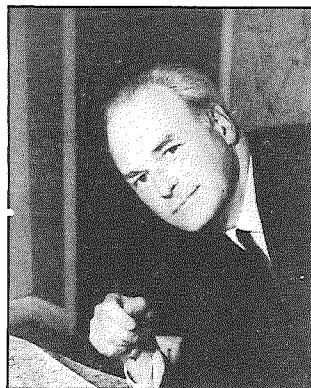
## Officers and Committee

The Branch elects its Committee members and officers at its Annual General Meeting. The Chairman, Vice Chairman, Honorary Secretary and Honorary Treasurer are elected annually whilst the other members of the Committee serve for a period of three years.

It has been the practice of the Branch to elect a Chairman for a period of office of only one year unlike some Branches which elect their Chairman for two or three year terms. This practice has brought a variety of characters and personalities to the Chair over the years and it is considered by committee members to be a singular honour to be so elected. With the exception of the first three years of the Branch, when David Morris held the post and when Vice Chairman Ken Horner and Jim McInnes assumed the Chairmanship on the resignation of the sitting Chairman, only two members have been twice elected to the position. Tony Walsh held office in 1964/65 and 1977/78 which is an indication of the high regard of the members for this elder statesman. John Davison is now holding the office for the second time, having previously been chairman in 1972/73, and it is appropriate that the Highway Authority's most senior Highway Engineer should be Chairman in the Branch's Jubilee Year.



**David Morris**



**Jim McInnes**

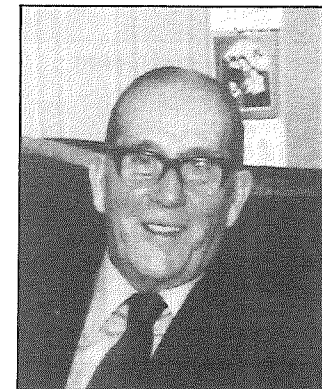
It is clear that the Branch owes a debt to every past Chairman for conducting the Committee's affairs for a year. However, two other past Chairmen deserve special mention for their work over a long period.

Arthur Dodd, now a sprightly octogenarian, was a willing and active member of the Branch for many years and a wonderful example of the type of help and co-operation which the Branch's trade members have given to the Institution over the years.

Ken Horner, also retired, was a founder member of the Branch and one of the mainstays of the Committee when membership was still low. In the early days of the Branch many meetings and social functions were held in Keswick where Ken's local knowledge and influence were invaluable.



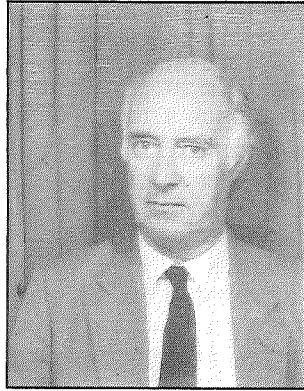
**Arthur Dodd**



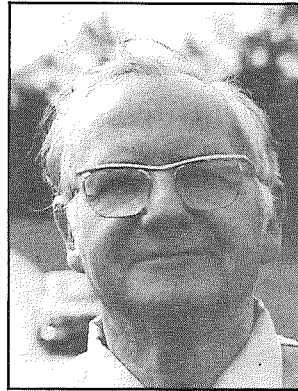
**Ken Horner**

Organisations all rely on well run Committees for their smooth running and success. Committees rely on Secretaries for their success. The post of Honorary Secretary is particularly difficult in the Northern Branch because of the wide geographical spread of members and the isolation of the Branch from the main centres of population. It is difficult to find speakers within the region and most have to be imported from the Country's commercial and academic centres. It is a credit to the officers that the post has been held by only 7 members in the last 25 years. With one exception the secretaries have left the post due to their retirement or moving from the area. The exception was David Bannerman who continues to serve the Branch as Council Representative.

Older members will remember the sterling work of Alan Brant and Rowland Green who moved on to other Branches.



**Rowland Green**

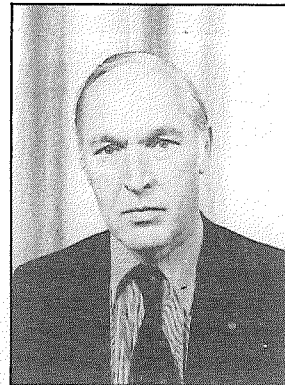


**Tom Graham**

Tom Graham had retired in 1974 but unfortunately since then has suffered ill health. A new, younger and some may consider fresher breed of Secretary took office from 1975 with John Clifton, Paul Adamson and David Bannerman, all of whom were no less able than their distinguished predecessors. The current Secretary, Ian Rutherford, is in the latter mould and must take a great deal of credit for bearing the brunt of the Jubilee organisation.



**Don Leech**



**Peter Guthrie**

Perhaps a more reassuring statistic is that the Branch has been served by an even smaller number of Treasurers. Don Leech was the founder Treasurer and served until 1965 when he was appointed Vice Chairman followed by Chairman the following year. Don established a system of good housekeeping for the Branch funds which has been followed by his successors.

Alistair Donaldson progressed similarly and was elected Chairman in 1969. Peter Guthrie is perhaps the record holder of the Branch having served for 11 years and still managed to balance the books at the end of his term. Peter was first elected to the Committee in 1968 and has held office since. His never-failing interest in Branch affairs and his assistance with social functions have been outstanding. It was a great pleasure to see him elected Chairman of the Branch in 1982 following shortly after Hedley Richardson, one of the Branch's other senior Fellows, both having previously given many years service as Companion Members.

The post of Treasurer has been held since 1979 by Bill Swarbrick who has managed the financial affairs of the Branch in the careful tradition of his predecessors.

The success of the Branch over the years has been due to the dedication of a relatively small number of officers and members. Over the 25 years of the Branch, only 60 members have served on the Committee, an average turnover of only 2 persons a year. The general view is that it has always been a happy committee in which differences have always been settled amicably. Credit must go to every Chairman for keeping a tight rein on Tony Walsh's verbosity and concluding all committee meetings before dawn.

### Chairman

1958-61 D Morris  
1961-62 K Horner  
1962-63 N Brown  
1963-64 J McInnes  
1964-65 A Walsh  
1965-66 G Gledhill  
1966-67 D Leech  
1967-68 D McLellan  
1968-69 A Dodd  
1969-70 A Donaldson  
1970-71 J McInnes  
1971-72 D R Butler  
1972-73 J A Davison  
1973-74 S J Herbert  
1974-75 W C Roberts  
1975-76 D N Lloyd  
1976-77 D Wrathall  
1977-78 A Walsh  
1978-79 J B Thompson  
1979-80 A Prady  
1980-81 H C Richardson  
1981-82 D J Andrews  
1982-83 I P Guthrie  
1983-84 J A Davison

### Officers and Committee 1983-84

Chairman: J A Davison  
Vice Chairman: B Fulton  
Hon Secretary: I Rutherford  
Hon. Treasurer: W A Swarbrick  
D J Andrews  
D S P Bannerman  
J C Challenor  
M. Clowes  
Co-opted M Leonard (HTTA)

### Secretaries

1958-63 A N Brant  
1963-68 R Green  
1968-75 T Graham  
1975-76 J Clifton  
1976-78 P R Adamson  
1978-82 D S P Bannerman  
1982- I Rutherford

### Treasurers

1958-65 D Leech  
1965-68 A Donaldson  
1968-79 I P Guthrie  
1979- W A Swarbrick

D M Cole  
I P Guthrie  
R G Hedley  
L G J Johnson  
A Prady  
P L Richardson  
G L Thom  
J B Thompson

### Chairman's Jewel

At the Fifteenth Annual General meeting held on the 18 April 1973 at the King's Head Hotel, Thirlmere it was proposed by Frank Alderson that steps be taken to raise funds for a Jewel of Office for the Chairman of the Committee. It was the unanimous feeling of the meeting that the Branch should acquire a Jewel of Office and the decision was recorded by minute.

A suitable Jewel of Office was designed and manufactured in 1974 and the funds were kindly provided by the Branch's "Trade" friends who have continued to meet the cost of its maintenance over the years. The Jewel is worn by the Chairman on special occasions and when representing the Branch. Each year the name of the outgoing Chairman is added to the ribbon.



David Andrews wearing the Chairman's Jewel.

## Membership

The success of any Branch of the Institution depends not just on the skill and organisation of the committee but on the enthusiasm and participation of the members. The Branch has always been a fairly close-knit organisation composed of a hard core of local authority engineers and local contractors and suppliers' professional staff. This relationship has been particularly well cemented in Committee with stalwart trade members such as Tom Graham, Arthur Dodd, Peter Guthrie and Hedley Richardson bringing a nice balance to offset the predominant local authority lobby.

In 1956, prior to the formation of the Branch, the membership in the Cumberland and Westmorland area was 15. By the time the Branch was formed in 1958 the number had risen to 44. Since then, as a result of the expansion of the Motorway and Trunk Road programme in the 1960's and 1970's and the recruitment policy of the committee, the number of members of all categories has risen to 130 in the current year.

However, recruitment is a continual and repetitive task and the committee and its recruitment officers rely on the members themselves to encourage and persuade their staff and associates as to the benefits of membership.

The Branch is one of the smallest in terms of numbers but has one of the highest attendance rates for meetings and site visits which is a credit to the enthusiasm of its members.

## Meetings

The main professional activities of the Branch revolve around its technical meetings which are held at roughly monthly intervals during the Autumn to Spring period.

The underlying theme of the lectures and forums is of course Highway Engineering but the committee has always tried to widen the scope of meetings to create interest and involvement of members and guests. Discussion on the composition of the annual programme of meetings and visits absorbs the greatest part of the committee's time.

The first technical meeting was held in the Courts at Carlisle on the 28 November 1958 when 102 members and guests attended to hear a talk by Mr McMillan on the Construction of a Motorway. The number attending this meeting is still thought to be a record. Meetings in recent years have been well attended by members and guests but attendance varies depending upon the subject of the talks.

The subjects offered at meetings have varied widely and, whilst it becomes increasingly difficult to arrange meetings with original subject matter, it is hoped to maintain the interest of members in the future. The completion of the motorway programme within Cumbria has not helped as the ongoing contracts always provided a wealth of interest and expertise from both the design and contract staff which simplified greatly the arranging of meetings and visits.

Apart from the many meetings and visits dealing with the design, construction and maintenance of roads and bridges the widely varying range of subject matter is illustrated by the following examples drawn from much larger programmes:

- Air survey
- Heavy haulage
- Failure of structures during erection and demolition
- Cumbernauld New Town
- Computers, and their use to a highway authority
- Road safety and accidents
- Costing in a highway department
- Architectural misconceptions of engineering
- Critical path techniques
- Traffic in the Lake District



Vehicle and highway design  
 Communications, redevelopment and industrial expansion  
 Conversion to metric system  
 Highways landscaping  
 Work study  
 Contract law and the special requirements of the EEC  
 River and sea gabions  
 Carlisle transportation study  
 Payment for transport  
 Some aspects of open cast coal mining in Britain  
 Traffic management  
 Public utilities  
 Reinforced earth  
 Law and the highway engineer  
 Finance of highway works  
 Roman roads  
 Public inquiries into road schemes  
 Transport of hazardous materials  
 Handling of waste  
 Insurance related to highways  
 Recycling of surfacing materials  
 Ribbleshead viaduct  
 Policing of highways  
 Block paving



**Tony Walsh**



**Hedley Richardson**

## Certificate of Merit

From time to time the Institution awards members who have made an outstanding contribution to the Institution or Highway Engineering with the Certificate of Merit. The Branch has two such members who have been so honoured for their work in the Branch and in Council.

Tony Walsh was a founder member of the Branch from its inception until his retirement from the Branch earlier this year. Tony was elected to the committee of the branch in March 1959 and worked tirelessly throughout his long term of office. He was Branch Chairman twice, in 1964/65 and 1977/78 and from 1977 to 1983 he served as Council member. Tony was always conscious of the anomaly of the class of membership known as Companion to which many of our Trade friends belonged and he was instrumental in persuading the Institution to abolish this class so that the members could be absorbed into full membership. It is pleasing to note that Hedley Richardson, the other holder of the Certificate of Merit, was also a strong campaigner for the abolition of Companion status and one of the first members to be transferred to Fellowship as a result of the change. In the latter context Peter Guthrie was also transferred similarly to the grade of Fellow. Since the change of rules both Hedley and Peter have served as Branch Chairman.

Hedley Richardson was elected a Companion member of the Institution in 1951 long before his election to the Northern Branch Committee after moving from the Midlands. He was elected to the Committee in 1973 and was Chairman for the 1981/82 session. Hedley brought a quiet persuasiveness and firm politeness to the committee when in the chair. He was the first ex-Companion to be chairman of the committee which confirmed the status of the trade or supply side representatives of the industry in the Branch and Institution. His retirement from his professional work was followed by his well earned retirement from committee.

Other past members of the Branch have been awarded the Certificate after moving on to other branches in the course of their professional work.

Tom Wilson was a co-opted member of the committee, serving in his ex-officio capacity as a Council Member. His friendliness and helpfulness in committee often surprised some members who had perhaps met a more robust and sterner character in the course of their professional work. Tom, of course became President of the Institution in 1976/77.

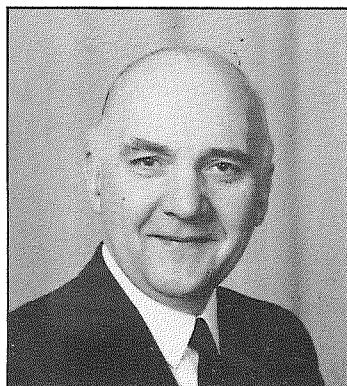
Alan Brant was the Honorary Secretary of the Branch when it was founded in 1958 and moved on in 1963. In 1982 Alan was awarded the Certificate for Services to the Institution with which he continued his work after leaving the Branch. Alan was a tireless worker as Branch Secretary and the originator of the idea that a Northern Branch should be formed. To this extent he made the necessary contacts which ensured the smooth transition from joint administration to full independence.

Geoff Potter served on the Branch committee from 1961 to 1965 before taking up an appointment in the Midlands. He became Institution President in 1980/81 and was awarded the Certificate for Services to Highway Engineering in 1983.

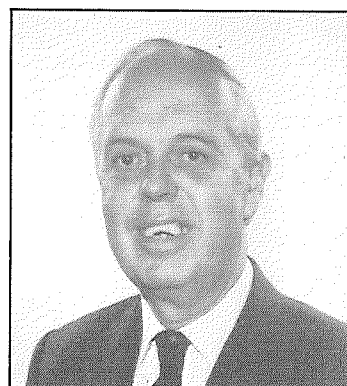


**Geoff Potter**

Finally the Branch has resident in its area retired member Fred Oliver who was awarded the Certificate in 1970 after many years of service to the Institution.



**Tom Wilson**



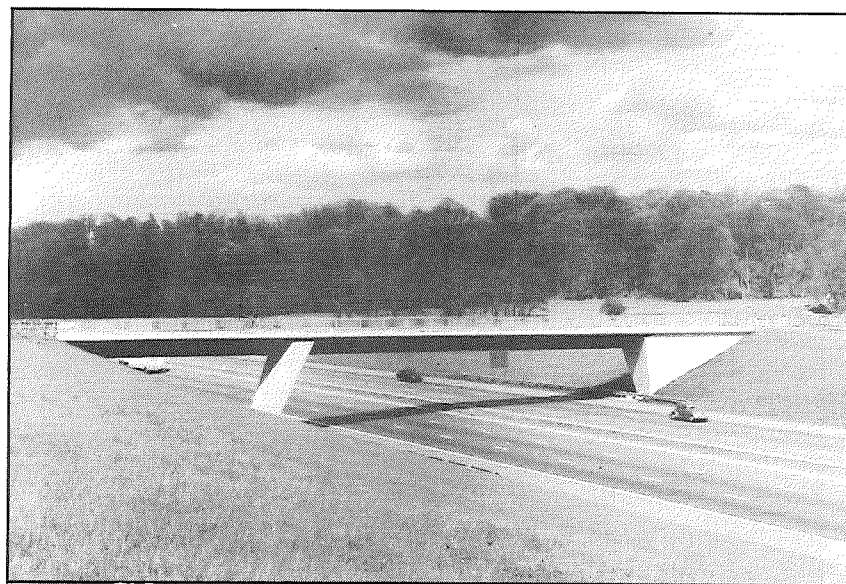
**Alan Brant**

## Visits

The Branch programme of meetings is supplemented by visits to sites of construction works, quarries and other places of technical interest to members. For example, the Branch has visited sites as diverse as Calder Hall, Long Meg Anhydrite Mine, Wet Sleddale Dam, Tyneside Metro and Barrow Shipyards as well as numerous road construction schemes and quarries.

When the Branch was first formed the membership was very enthusiastic and three or four visits were held each year. However, as the amount of public investment in the Branch area has reduced each year it has become more and more difficult to find suitable schemes for visits. This has perhaps been reflected in the visits over the last six years when only one of the visits involved major highway works.

It is hoped that this trend will be reversed in the future and that once again the Branch Committee will be able to arrange a full programme of site visits.



**Monk's Lane Bridge.** Penrith to Carlisle Motorway.

## Visits 1958 - 1982

- 1958-59** Calder Hall  
Haweswater Aqueduct
- 1959-60** Catterick Bypass and Lackenby Steel Works  
Lowca Tar Distillation Works  
Lancaster Bypass  
Shap Concrete Works
- 1960-61** Lancaster Bypass  
Consett Iron and Tarmacadam Works  
Carlisle Railway Marshalling Yards  
Doncaster Bypass and Wentbridge Viaduct
- 1961-62** Threlkeld Granite Quarry  
Forth Road Bridge  
Doncaster Bypass, Wentbridge Viaduct and  
Brotherton Bypass
- 1962-63** Forth Road Bridge  
Long Meg Anhydrite Mine  
Portinscale Bypass
- 1963-64** Cumbernauld New Town  
Preston-Lancaster Motorway
- 1964-65** Preston-Lancaster Motorway  
Newmains Concrete Works
- 1965-66** Wet Sleddale and Haweswater Dams  
Dumfriesshire Roadworks
- 1966-67** Barrow-in-Furness  
Cumberland and Westmorland Roadworks
- 1967-68** Penrith Bypass  
Westmorland Motorway
- 1968-69** Penrith Bypass
- 1969-70** Westmorland Motorway  
Carlisle Bypass (Joint ICE)  
Penrith-Carlisle Motorway
- 1971-72** Penrith-Carlisle Motorway  
Manchester Corporation Waterworks  
Leighton Moss
- 1972-73** Threlkeld Quarry  
Gaisgill-Newbiggin Roadworks

<b>1973-74</b>	Tyre Works, Carlisle
<b>1974-75</b>	National Power and Lighting Emergency Visits cancelled
<b>1976-77</b>	Shap Aqueduct Works A66 Improvements Gypsum Mine
<b>1977-78</b>	Chemical Works, Lowca Salt Mine, Cheshire
<b>1978-79</b>	Tyneside Metro
<b>1979-80</b>	Windscale Works
<b>1980-81</b>	Shap Quarry and Appleby Bypass Windscale Works
<b>1981-82</b>	Police Headquarters, Penrith
<b>1982-83</b>	Barrow Shipyards

## Social Functions

In addition to its comprehensive and varied programme of lectures, forums and site visits the Branch has always maintained a complementary social programme.

In the early days of the Branch the traditional tattie-pot supper followed meetings and Annual General Meetings and guests were always invited and welcomed. Amongst the venues, suppers were taken at the George Hotel, Keswick the Salutation Inn, Threlkeld and the King's head, Thirlspot. Latterly meetings have been held earlier in the evenings in the more formal atmosphere of the Civic Centre, Carlisle and the County Hall, Kendal following buffet teas. However, the Annual General Meetings are now regularly held in the George Hotel, Penrith and guests are invited to the incoming Chairman's address and the excellent buffet suppers which follow.

The highlight of the Branch social programme is the Annual Dinner to which the Institution President, Secretary and guests are invited. Over the years the other guests have included Lord Bowden, Viscount (Willie) Whitelaw and Sir James Drake.

The first Annual Dinner was held on the 24 March 1960 at the Royal Oak Hotel, Keswick. Over the years the venue has moved to the George Hotel, Penrith where a close and agreeable relationship has been established with the management. The occasion is nearly always fully subscribed although in 1979 a sudden snowstorm prevented many members and guests from attending the dinner. Second only to the entertainment provided by the many and excellent speeches is the sweepstake for the length of time taken by the speakers which is organised by Dixie Dean amongst his guests. Many a jubilant but naive punter has learned to his cost the high price to be paid by the winner of the sweepstake.

The committee has always tried to involve the ladies of members in Branch social functions. The first Ladies Evening was held at Shap Wells Hotel in October 1962 and was a great success. Interest has varied over the years and one of the highlights was a cruise, dance and supper on Ullswater in July 1980 attended by the Institution President Geoff Potter, Mrs Potter and Secretary Patricia Steel.

Latterly two dinner dances have been held at the George Hotel, Penrith and a disco-dance at Carrow House, Carlisle.

## Locan Cup Golf Competition

The Locan Cup is competed for by teams representing most of the Branches of the Institution. It is a four ball, better ball Stableford competition.

The Locan Cup was formerly a horse racing trophy and is a hundred years old. This prestigious trophy was presented to the North Western Branch in 1948 by Mr Charles Locan, a Lancashire industrialist. The trophy was offered for competition on a National basis in 1953 by the North Western Branch. The venue of the competition changes every year depending upon which Branch is the host and over the years some of the finest courses in the British Isles have been visited. Amongst these have been Saint Pierre at Chepstow, Royal Portrush and Carnoustie.

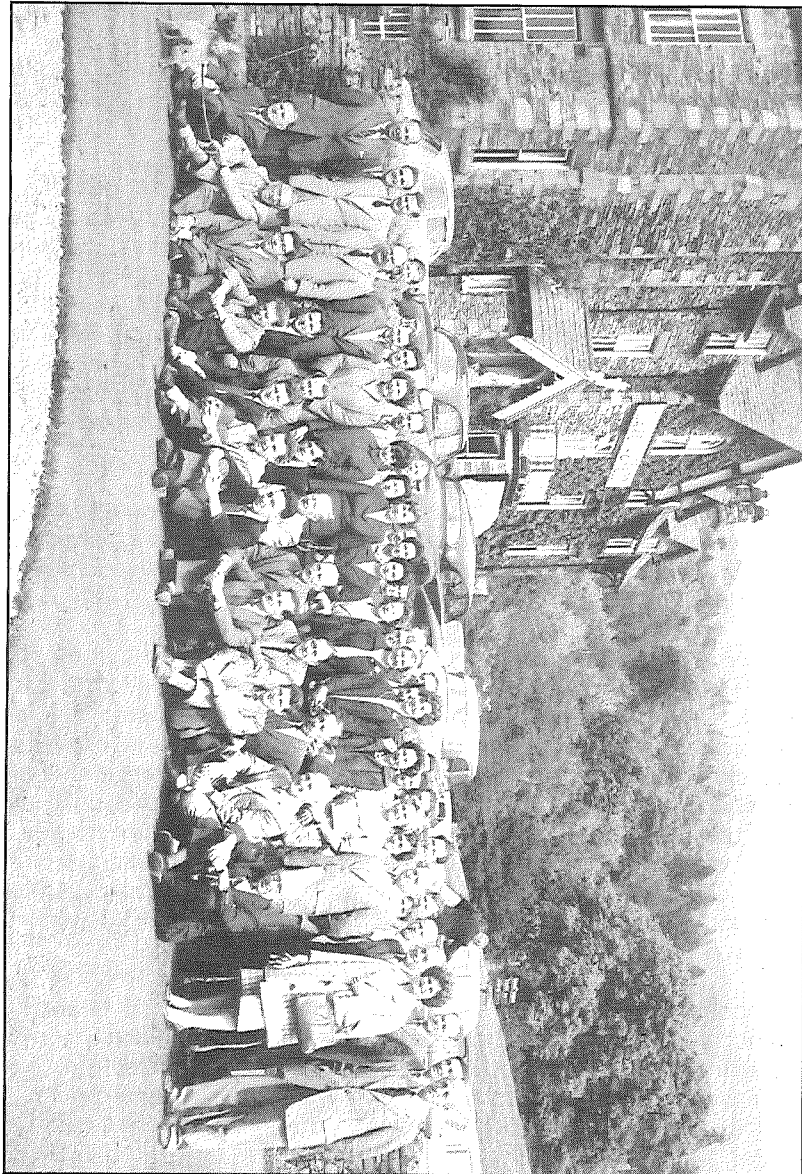
During this Jubilee year the Branch was honoured to be host to the competition and Ulverston Golf Club was chosen as the venue. The competition was held on Monday 12 September 1983. The weekend commenced with a Dinner on the Sunday evening at the Cumbria Grand Hotel at Grange-over-Sands, attended by the President, Mike Hardy; John Leigh, the Chairman of the Locan Cup Committee and Patricia Steel, the Institution Secretary.

On the Monday 14 branches were represented and the Cup was won by the North Western Branch. The competition was played on a beautiful sunny day and the course was in superb condition.

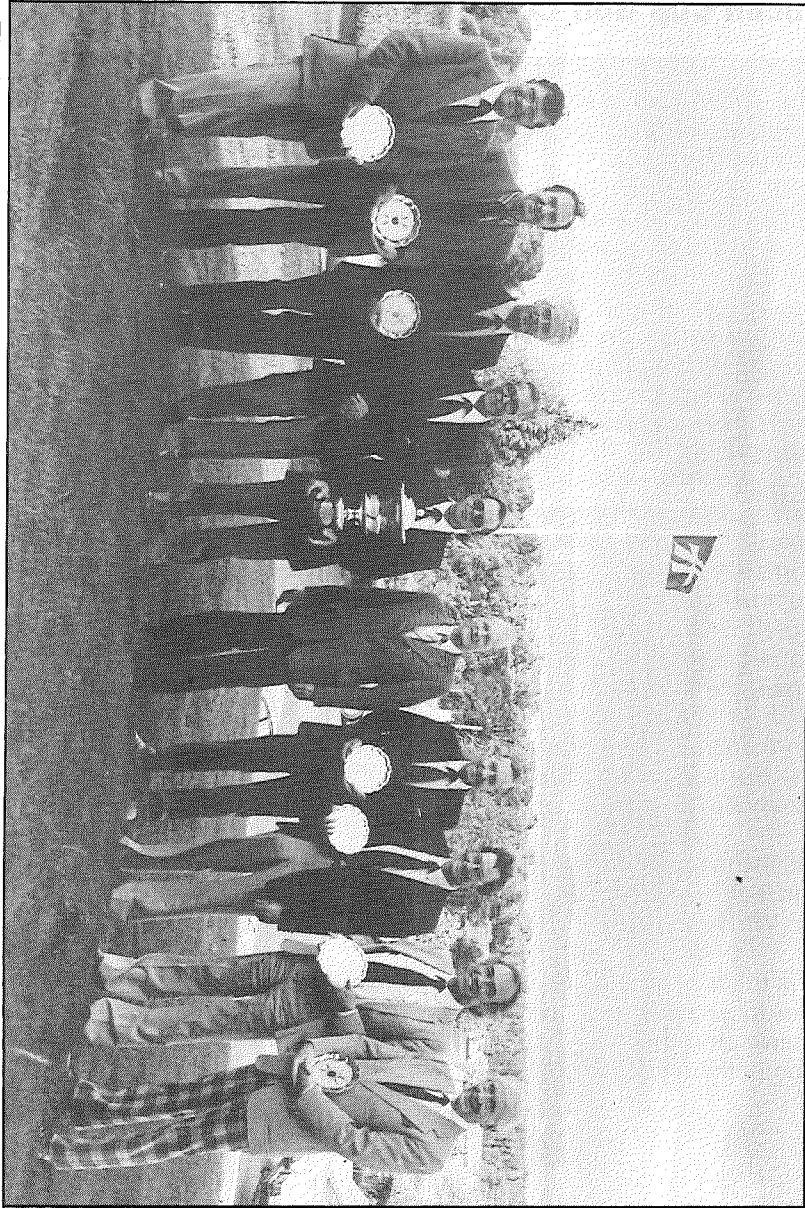
Whilst the golfers were enjoying the day out, Bill Swarbrick entertained the ladies with a coach tour of the southern Lake District and a boat trip on Windermere.

It is to Paul Richardson, ably helped by Tony Wicks, Hedley Richardson, Gordon Hedley and Tony Walsh, that the Branch Committee owes its thanks for the many hours of hard work in organising the Jubilee competition at Ulverston.

An early social visit in the Lake District.







## Chairman's Message



**J A Davison**  
Branch Chairman 1983/84

By the time they have reached this page, readers of this brochure, if they did not previously know it, will have realised that this Institution of Highways and Transportation is somewhat different from the normal run of professional engineering institutions and, indeed, that is where its strength lies.

It is perhaps a unique organisation in that its membership embraces professional representatives from all of the different bodies, organisations, companies and firms involved in highway design, construction, maintenance and administration, together with allied trades and industries. It provides a meeting point and a forum for a large number of highway and associated interests from which the general public, who ultimately foot the bill, can only benefit. The technical meetings, site visits and discussions organised by the branches at local level, besides keeping senior engineers abreast of developments, play a vital part in the training of young engineers. I know that this is recognised by various categories of employers and, not least, by the Cumbria County Council as Local Highway Authority employing some 54% of the Northern Branch membership. We are grateful for the encouragement and, indeed, the practical support which the Branch has received, and is receiving, from employers in the area.

This, more serious, side of our activities is important and rightly takes priority, but the social side is not forgotten and there is an excellent spirit of friendship and co-operation throughout the membership.

I have just mentioned the general public who, one way or another, "foot the bill" for road and bridge construction and maintenance, for traffic management, control and administration. As members of the Northern Branch of the Institution, we are proud of the service we have provided for the public over the last 25 years. We feel that, whilst many of our achievements, like the M6 Motorway, must already be well known, many people may well be surprised at the range and volume of the substantial contributions to the public service made by local firms and organisations, as evidenced by the exhibition staged at the Civic Centre by courtesy of the Mayor and City of Carlisle, which assistance is gratefully acknowledged.

Our achievements over the past 25 years therefore speak for themselves, and whilst a backward look may, on occasions, be very useful, we are essentially a forward looking organisation. Much remains to be done to halt the decline in maintenance standards on many of our roads, and the campaign to reduce the appalling national toll of road accidents must be pressed forward.

New legislation has brought, and will bring, new challenges to members of our Branch. I am confident that, as professionals, we will successfully meet all the challenges of the next 25 years and beyond, as we have already done in the quarter of a century just completed and which we proudly celebrate this year.

## Acknowledgements

The thanks and appreciation of the branch are extended to all those members, authorities and companies who have contributed to the success of the Jubilee Exhibition and to the production of this brochure.

Allot and Lomax  
ARC Ltd  
Balfour Beatty Construction Ltd  
Balfour Beatty Power Construction Ltd  
Barrow-in-Furness Borough Council  
Border Engineering Co Ltd  
Carlisle City Council  
Cumbria County Council  
Cumbrian Industrials Ltd  
George Dew and Co Ltd  
Dowsett Engineering Construction Ltd  
Eden Construction Ltd  
Eskett Quarries Ltd  
Fairclough Civil Engineering Ltd  
Harbour and General (Stevin) Ltd  
John Laing Construction Ltd  
Redland Prismo Ltd  
Shap Granite Co Ltd  
Scott Wilson Kirkpatrick and Partners  
Tarmac National Construction

The Branch is indebted to the management team of George Thom, Peter Guthrie, Ian Rutherford and Bill Swarbrick under the Chairmanship of Bryce Fulton for organising the exhibition and reception.

The brochure was researched and edited by Bill Swarbrick who relied on the wealth of knowledge and experience of Tony Walsh, for much of the material.

This brochure was printed by Cumbria County Council Chief Executive's Department, Printing Section.